

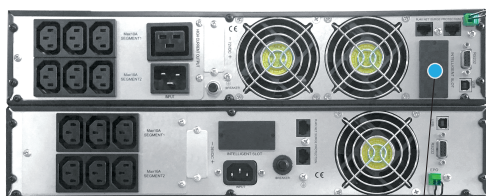


MEMOPOWER PLUS RT II SERIES

1~3kVA
1:1 phase PF: 0.9



Two directions LCD display



Optional socket



Mini dry
contact card



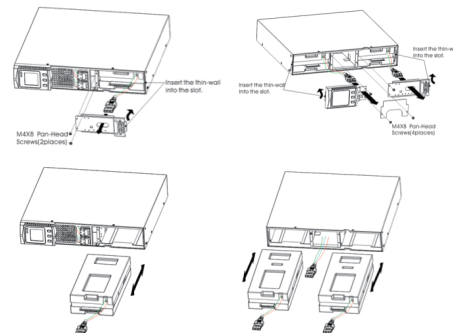
Multifunctional
bracket



Rack-Tower
convertible



Battery Cabinets
(Optional)



Easy for maintenance,
hot-swappable battery

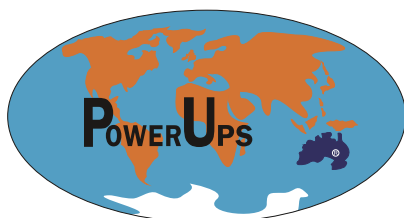
Features

- Rack/Tower Convertible Design
- Patented Mimic LCD Display May be Rotated by Simply Pushing Front Button
- True Online Double Conversion
- High Output Power Factor at 0.9PF
- Comprehensive display allows easy monitoring and access of UPS status
- Smart SNMP works with either USB or RS-232 together
- Hot-Swappable Battery
- Efficiency up to 90%
- Estimated Remaining Time displayed on the LCD
- Support Economic (ECO) Operation Mode
- Matching Battery Pack
- Optional Powerful Charger
- Cold Start
- Power Shedding May Turn Off Uncritical Load in Battery Backup
- Emergency Power Off
- Frequency Converter Mode Is Settable

Technical Specifications:

MODEL		MP S RT2 1KVA S/H	MP S RT2 1.5KVA S/H	MP S RT 2KVA S/H	MP S RT 3KVA S/H
Capacity(VA/Watts)		1000/900	1500/1350	2000/1800	3000/2700
INPUT					
Rated Voltage		200/208/220/230/240Vac			
Voltage Range		110~290Vac			
Frequency Range		45~65Hz(auto-detect)			
Power Factor		≥0.98			
Bypass Voltage Range		Max.voltage: +15%(optional +5%、+10%、+25%) Min. voltage: -45% (optional -15% -20%、-30%) Frequency protection range: ±10%			
Generator Input		Support			
OUTPUT					
Rated Voltage		200/208/220/230/240Vac			
Power Factor		0.9			
Voltage Regulation		±2%			
Frequency	Utility Mode	50Hz or 60Hz(Synchronized to Mains)			
	Battery Mode	50/60Hz±0.02Hz			
Crest Factor		3:1			
THDv		≤3% with linear load ≤5% with non linear load			
Efficiency	AC Mode(full load)	up to 90%			
	Battery Mode(full load)	>85%			
	ECO Mode(full load)	>94%			
BATTERY					
Standard Model	Battery Type	12V/9AH	12V/9AH	12V/9AH	12V/9AH
	Numbers	2	3	4	6
	Typical Recharge Time	4 hours recover to 90% capacity			
	Charging Current(max.)	1.4A			
	Charging Voltage	27.4Vdc±1%	41.0Vdc±1%	54.7Vdc±1%	82.1Vdc±1%
Long-run Model	Battery Numbers	Depending on the capacity of external batteries			
	Charging Current(max.)	6A/12A(double board)	7A/14A(double board)	6A/12A(double board)	6A/12A(double board)
	Charging Voltage	27.4Vdc±1%	41.0Vdc±1%	54.7Vdc±1%	82.1Vdc±1%
SYSTEM FEATURES					
Transfer time		Utility to Battery : 0ms; Utility to bypass< 4ms			
Overload	AC Mode	Load <100%~150%: 30S; Load > 150%: 300ms then shut down UPS completely			
	Bat. Mode	Load <100%~150%: 30S; Load > 150%: 300ms then shut down UPS completely			
	Bypass Mode	Load > 130%: 60S then shut down output			
Audible & Visual		Line Failure, Battery Low, Overload, System Fault			
Status LED & LCD		Load/Battery/Input/Output/Operating Mode Information			
ENVIRONMENTAL					
Dimension(W×H×D)mm		440×86.5×430	440×86.5×430	440×86.5×552	S: 440×86.5×710 H: 440×86.5×552
Weight (Kg)		S:15.1 / H:8.5	S:18.1 / H:8.8	S:22.2 / H:12.2	S:29.8 / H:12.5
Input Connection		IEC320 C14-10A	IEC320 C14-10A	IEC320 C20-16A	IEC320-C20-16A
Output Connection		IEC320 C13-10A x 6	IEC320 C13-10A x 6	IEC320 C13-10A x 6	IEC320 C13-10A x 6 & C19-16A x 1
Communication Interface		Smart RS232/USB Port/RJ45/SNMP Card (independent to RS232)			
Operating Temperature		0~40℃			
Storage Temperature		-25~+55℃			
Humidity		0~90% (non condensing)			
Altitude		<1500m.(derating while > 1500m)			
Noise		<50dB(at 1 meter)			
BATTERY BANK					
Model		RTII-BR04009	RTII-BR06009	RTII-BR08009	RTII-BR12009
Bat.Type&Max.Quantity		9AH×4	9AH×6	9AH×8	9AH×12
PHYSICAL OF BATTERY BANK					
Unit Dimensions W×H×D (mm)		440×86.5×430	440×86.5×430	440×86.5×552	440×86.5×710
Weight (Kg)		12	15	22	32

Specifications are subject to change without prior notice.



Australia PowerUps

Address : 73 Boomerang Place, Seven Hills, NSW 2147, Australia

Website : www.powerups.com.au

Tel : 61 2 9831 8412

Email : enquiry@powerups.com.au